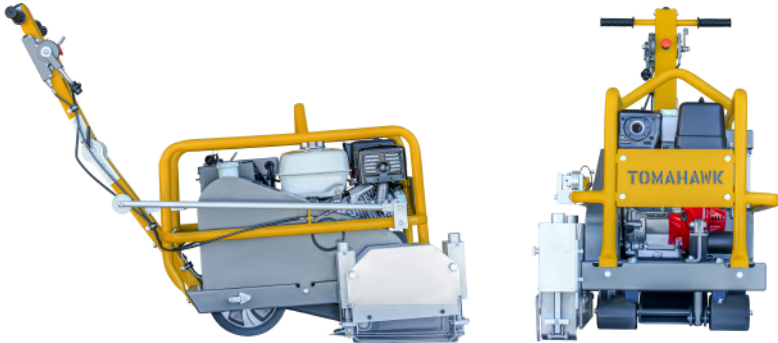


**TFS10H**



## Specifications

<b>Engine</b>	Honda GX390
<b>Power</b>	13 HP
<b>Max Cutting Depth</b>	1.5"
<b>Blade Size</b>	9-10"
<b>Blade Flange</b>	Triangular
<b>Depth Adjustment</b>	Electric
<b>Blade Included</b>	Yes
<b>Dust Port</b>	OSHA Compliant
<b>Wheel Material</b>	Polyurethane
<b>Weight</b>	320 lbs
<b>Dimensions</b>	45" x 27" x 36"
<b>Engine Warranty</b>	3 Year
<b>Product Warranty</b>	1 Year



## FEATURES

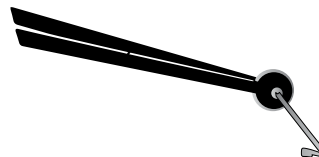
- 13 HP Honda GX390 engine
- Maximum cutting depth of 1.5 inches
- Fits blade sizes up to 9-10 inches
- Electric blade depth adjustment
- Excellent for concrete joints and random crack control
- OSHA compliant vacuum port for dust collection
- Polyurethane wheels for safe operation on fresh concrete
- Comfortable grip handles for easy operation
- 3-year engine warranty and 1-year product warranty
- EPA and CARB compliant



13 HP / 389 cc  
Honda GX390 Engine



OSHA Approved Dust Port for  
Dust & Silica Collection



Saw Guide Ensures  
Straight Cuts



1 Year Product Warranty  
3 Year Engine Warranty